

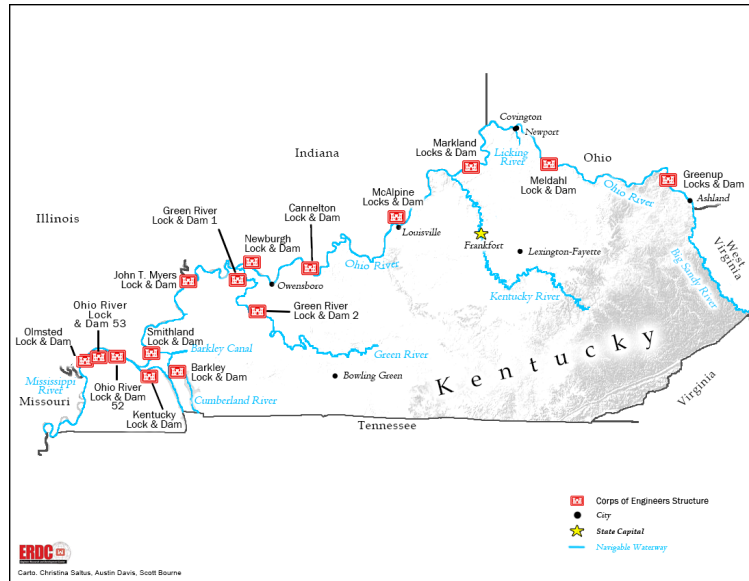


US Army Corps
of Engineers

U.S. ARMY CORPS OF ENGINEERS

Kentucky

BUILDING STRONG®

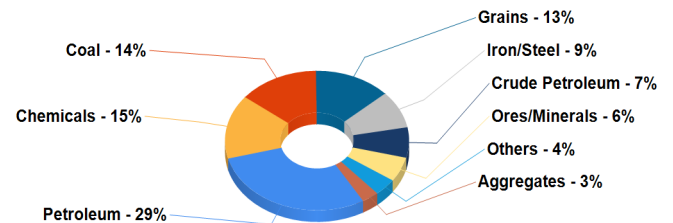


2020 State Quick Facts (Tons in Millions)

Tons Shipped -	39.9
Tons Received -	22.2
Tons Shipped Within State -	15.4
Total Commerical Docks -	180
Total Value (billions)-	\$8.45
Total Domestic Tons -	77.5
Total Import Tons -	0.0
Total Export Tons -	0.0
Total Tons -	77.5

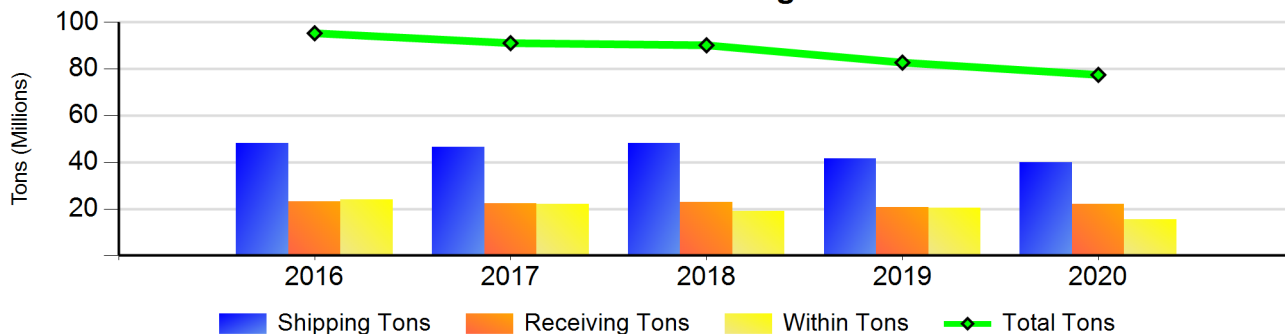
Source: Waterborne Commerce Statistics, Values estimated from 2019 NDSU UGPTI Commodity Valuation Study, values indexed by PPI to 2020 price level. (Commodity dollar values are not calculated for foreign movements)

2020 All Traffic Commodity Value Distribution



Source: Waterborne Commerce Statistics, Values estimated from 2019 NDSU UGPTI Commodity Valuation Study, values indexed by PPI to 2020 price level. (Commodity dollar values are not calculated for foreign movements), Remaining 0% unable to release due to insufficient operators

State Five Year Tonnage Trend



Source: USACE Waterborne Commerce Statistics

U.S. ARMY CORPS OF ENGINEERS PLANNING CENTER OF EXPERTISE FOR INLAND NAVIGATION

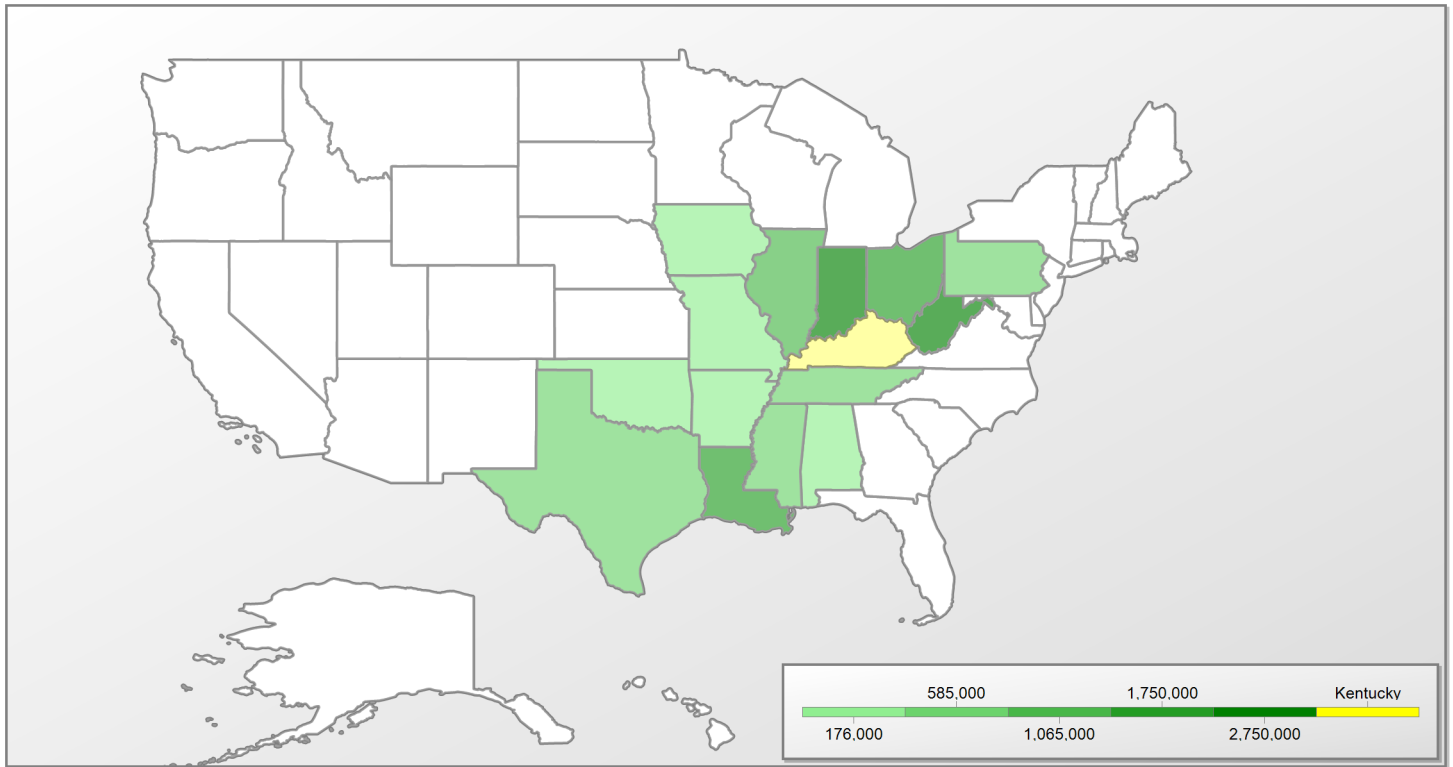
502 8th Street, Huntington, WV 25701-2070

<https://www.lrh.usace.army.mil/Missions/pcxin-outreach/>



Kentucky - Continued

2020 States Sending Commodities to Kentucky



Source: USACE Waterborne Commerce Statistics

State Sending Tons	Total Tonnage Sent to Kentucky	Top Commodity - % of Total Sent to Kentucky
West Virginia	5,952,606	Petroleum-54%
Louisiana	4,329,617	Ores/Minerals-37%
Ohio	4,315,922	Crude Petroleum-49%
Indiana	3,193,852	Aggregates-77%
Illinois	1,289,635	**
Mississippi	749,309	Others-89%
Pennsylvania	609,350	Coal-57%
Texas	484,096	Chemicals-71%
Missouri	451,152	Others-72%
Tennessee	371,081	Petroleum-93%
Arkansas	317,216	Petroleum-90%
Oklahoma	59,036	**
Alabama	45,951	Iron/Steel-32%
Iowa	12,820	**

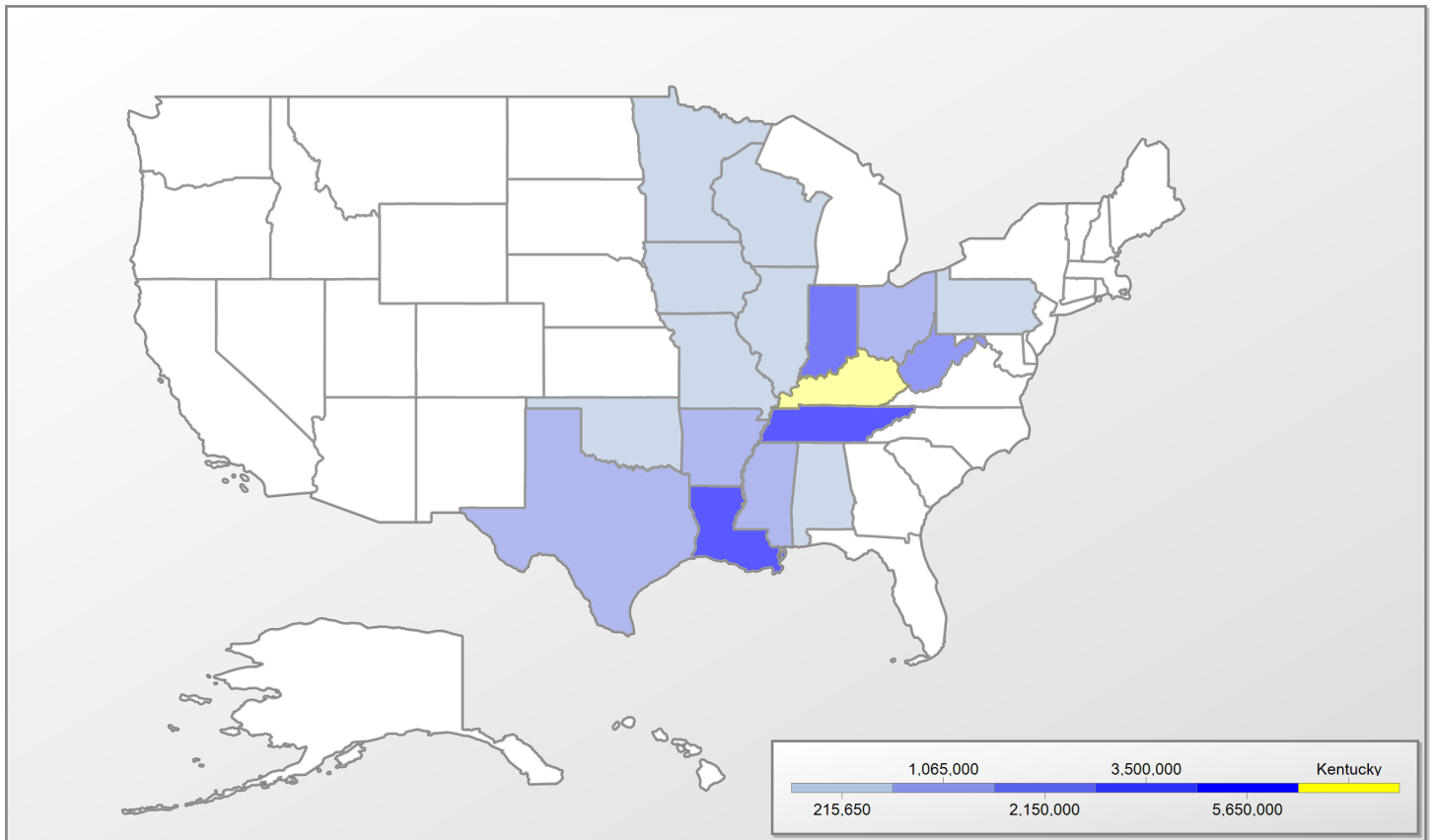
**Unknown and Not Elsewhere Classified Products

U.S. ARMY CORPS OF ENGINEERS
PLANNING CENTER OF EXPERTISE FOR INLAND NAVIGATION
502 8th Street, Huntington, WV 25701-2070
<https://www.lrh.usace.army.mil/Missions/pcxin-outreach/>



Kentucky - Continued

2020 States Receiving Commodities From Kentucky



Source: USACE Waterborne Commerce Statistics

State Receiving Tons	Total Tonnage Received from Kentucky	Top Commodity - % of Total Received from Kentucky
Louisiana	12,803,327	Aggregates-44%
Tennessee	11,125,160	Aggregates-62%
Indiana	4,288,885	Coal-76%
Ohio	3,486,690	Coal-33%
West Virginia	2,758,148	Aggregates-77%
Texas	1,532,155	Aggregates-93%
Mississippi	1,310,832	Aggregates-100%
Arkansas	719,363	Aggregates-74%
Missouri	549,834	**
Alabama	501,320	Aggregates-39%
Pennsylvania	440,119	Aggregates-57%
Illinois	213,320	Others-42%
Iowa	88,378	**
Oklahoma	87,833	**
Minnesota	2,454	**
Wisconsin	1,347	**

**Unknown and Not Elsewhere Classified Products

U.S. ARMY CORPS OF ENGINEERS
PLANNING CENTER OF EXPERTISE FOR INLAND NAVIGATION
502 8th Street, Huntington, WV 25701-2070
<https://www.lrh.usace.army.mil/Missions/pcxin-outreach/>



Kentucky - Continued

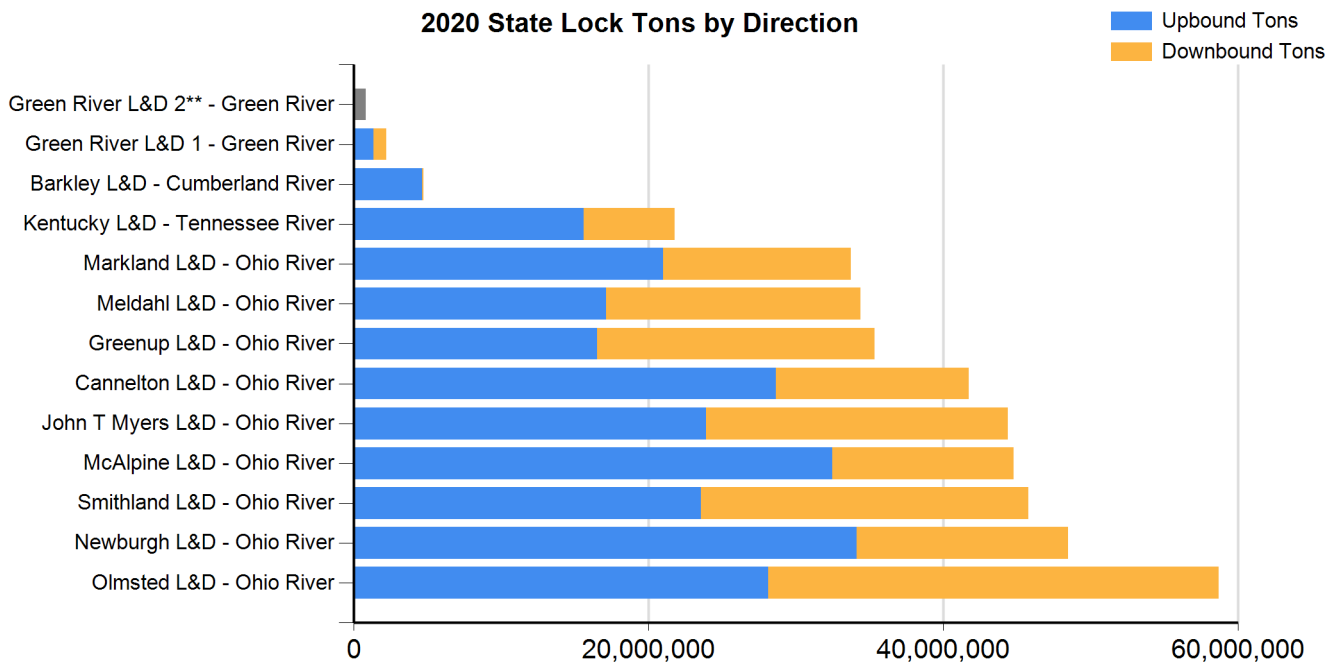
Five Year Trend of Tonnage Shipped or Received in Kentucky

Commodity Group	Avg Tonnage (Millions)	% of Total Tons (All Years)	Five Year Commodity Trend (Millions of Tons)				
Aggregates	29,456,855	34%	28.39	29.65	31.32	29.33	28.59
			2016	2017	2018	2019	2020
Chemicals	2,963,708	3%	2.77	2.98	3.07	3.04	2.97
			2016	2017	2018	2019	2020
Coal	31,900,678	36%	40.20	34.85	32.38	27.82	24.25
			2016	2017	2018	2019	2020
Crude Petroleum	1,620,532	2%	0.68	1.12	1.65	2.15	2.51
			2016	2017	2018	2019	2020
Grains	5,234,452	6%	5.53	4.93	5.02	5.25	5.44
			2016	2017	2018	2019	2020
Iron/Steel	2,358,443	3%	2.08	2.73	2.72	2.45	1.81
			2016	2017	2018	2019	2020
Ores/Minerals	1,722,490	2%	1.84	1.70	1.66	1.72	1.69
			2016	2017	2018	2019	2020
Others	3,210,059	4%	3.19	3.32	3.79	2.96	2.78
			2016	2017	2018	2019	2020
Petroleum	8,934,378	10%	10.68	9.85	8.60	8.07	7.47
			2016	2017	2018	2019	2020

Source: USACE Waterborne Commerce Statistics

** - Year = Insufficient Operators to Release Tonnage

2020 State Lock Tons by Direction



Source: USACE Waterborne Commerce Statistics

** - Insufficient operators to release directional tonnage

U.S. ARMY CORPS OF ENGINEERS PLANNING CENTER OF EXPERTISE FOR INLAND NAVIGATION

502 8th Street, Huntington, WV 25701-2070

<https://www.lrh.usace.army.mil/Missions/pcxin-outreach/>



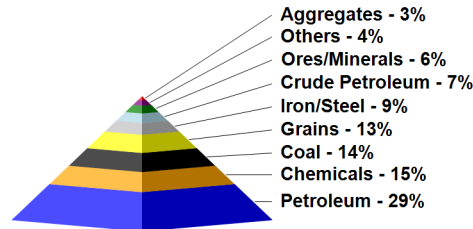
Kentucky - Continued

Domestic Commodity Value Distribution Charts by Waterway Type

Source: Waterborne Commerce Statistics, Values estimated from 2019 NDSU UGPTI Commodity Valuation Study, values indexed by PPI to 2020 price level (Commodity dollar values are not calculated for foreign movements)

2020 River Traffic Commodity Value Distribution

Total Value: \$8.45 (Billion)



Remaining <1% unable to release due to insufficient operators

Kentucky 2020 Top 5 Waterways (Tons in thousands; values in Millions of dollars)

Waterway Name	State Rank	Tons	Value
Ohio River	1	52,286.3	\$5,117.9
Tennessee River, TN, AL and KY	2	10,460.8	\$1,051.3
Cumberland River	3	8,225.2	\$179.8
Big Sandy River, Tug and Levisa Forks, KY and WV	4	4,648.7	\$1,303.0
Green and Barren Rivers, KY	5	2,286.1	\$297.5

Source: USACE Waterborne Commerce Statistics, Values estimated from 2019 NDSU UGPTI Commodity Valuation Study, values indexed by PPI to 2020 price level
(Commodity dollar values are not calculated for foreign movements)

** Insufficient operators to release tonnage

Kentucky 2020 Top 3 Ports (Tons in thousands)

Port Name	U.S. Rank	Type	Total Port Tons	Port Tons Within State
Cincinnati-Northern KY, Ports of	2	River	34,476.3	21,439.6
Louisville-Jefferson Port, KY	12	River	8,069.3	8,069.3
Paducah-McCracken Riverport, KY	17	River	5,004.9	5,004.9

Source: USACE Waterborne Commerce Statistics
Tonnage represents only shipped or received in the state and port, and not necessarily the total port tonnage.

** Insufficient operators to release tonnage

U.S. ARMY CORPS OF ENGINEERS
PLANNING CENTER OF EXPERTISE FOR INLAND NAVIGATION
502 8th Street, Huntington, WV 25701-2070
<https://www.lrh.usace.army.mil/Missions/pcxin-outreach/>