

# PITTSBURGH DISTRICT WATERWAYS SYMPOSIUM

***HEADWATERS EXCELLENCE!!***

COL Andrew J. “Coby” Short  
District Commander  
November 08, 2019



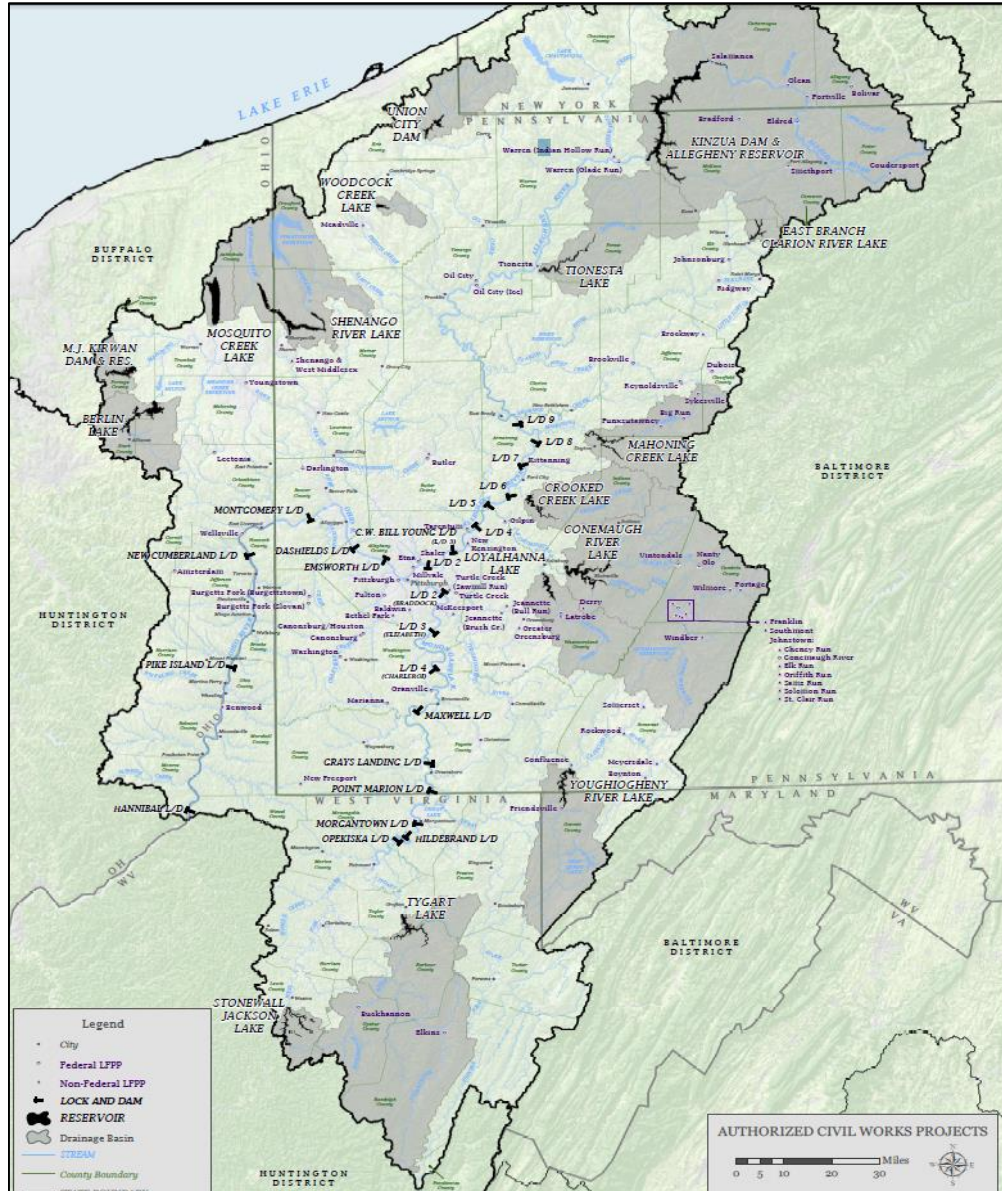
US Army Corps  
of Engineers®







# The “Headwaters District”



- **Watershed Boundaries – 26,000 Square Miles in 5 States**
- **328 Miles of Navigable Waterway**
- **23 Navigation Locks and Dams**
- **16 Multi-Purpose Risk Management Reservoirs**
- **700 Employees**
- **Providing Reliable Inland Navigation for our Nation**





# Lower Monongahela MEGA Project

4



**Braddock  
Locks and Dam**  
River Mile 11.2  
Placed in Service – 1906



**Locks and  
Dam 3**  
River Mile 23.8  
Placed in Service – 1907



**Charleroi  
Locks and Dam**  
River Mile 41.5  
Placed in Service – 1936

- Authorized in 1991
- Construction funding began in 1995
- Braddock Dam completed in 2004
- Years of Inefficient Funding
- 90% Project Benefits at \$1.2B and 2023 completion

# Lower Monongahela MEGA Project



Braddock Dam  
2000



Locks and Dam 4 – Charleroi  
1934



# Charleroi Lock and Dam





# Upper Ohio Navigation Project



**Emsworth**  
Ohio River Mile 6.2  
Placed in Service – 1922  
Rehab completed – 1986



**Dashiels**  
Ohio River Mile 13.3  
Placed in Service – 1929  
Rehab completed – 1990

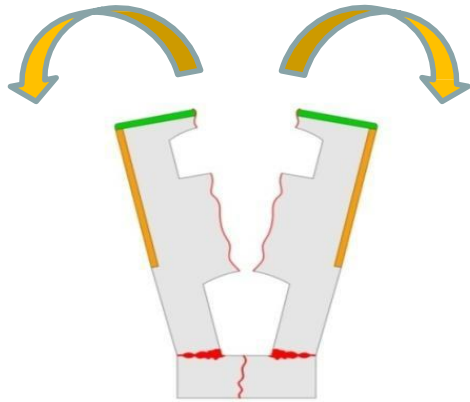


**Montgomery**  
Ohio River Mile 31.7  
Placed in Service – 1936  
Rehab completed – 1989

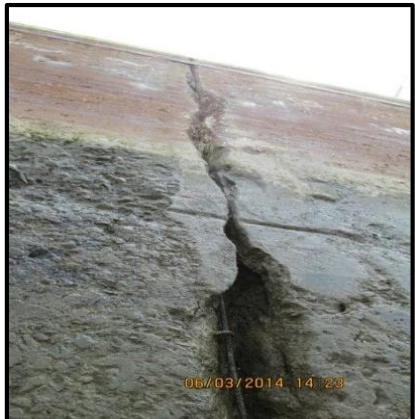
- Authorized on December 16, 2016 (WIIN Act)
- Ensure reliable navigation on the Upper Ohio River
- Cost (FY2019) ~ \$2B
- Schedule - 10 years minimum

# Upper Ohio Navigation Project

*All three project sites were built between 1919 and 1936 and underwent rehabilitation in the 1980's to extend their useful life another 25 years.*



Potential Failure - Middle Wall



Year Major Lock Components Reach 50% Reliability Rehabilitation is not Feasible		
Facility	Landwall	Middewall
Montgomery	2022	2028
Dashields	2025	2031
Emsworth	2034	2035



# Upper Ohio Navigation Project





# Pittsburgh District - Way Ahead



- Continue Momentum on Lower Mon
- Capital Investment Strategy
- Stakeholder Outreach/Education
- Collaboration with Inland Navigation Design Center
- Posture for Major Construction beginning FY22-FY24
- Maintain Reliable Inland Navigation

