

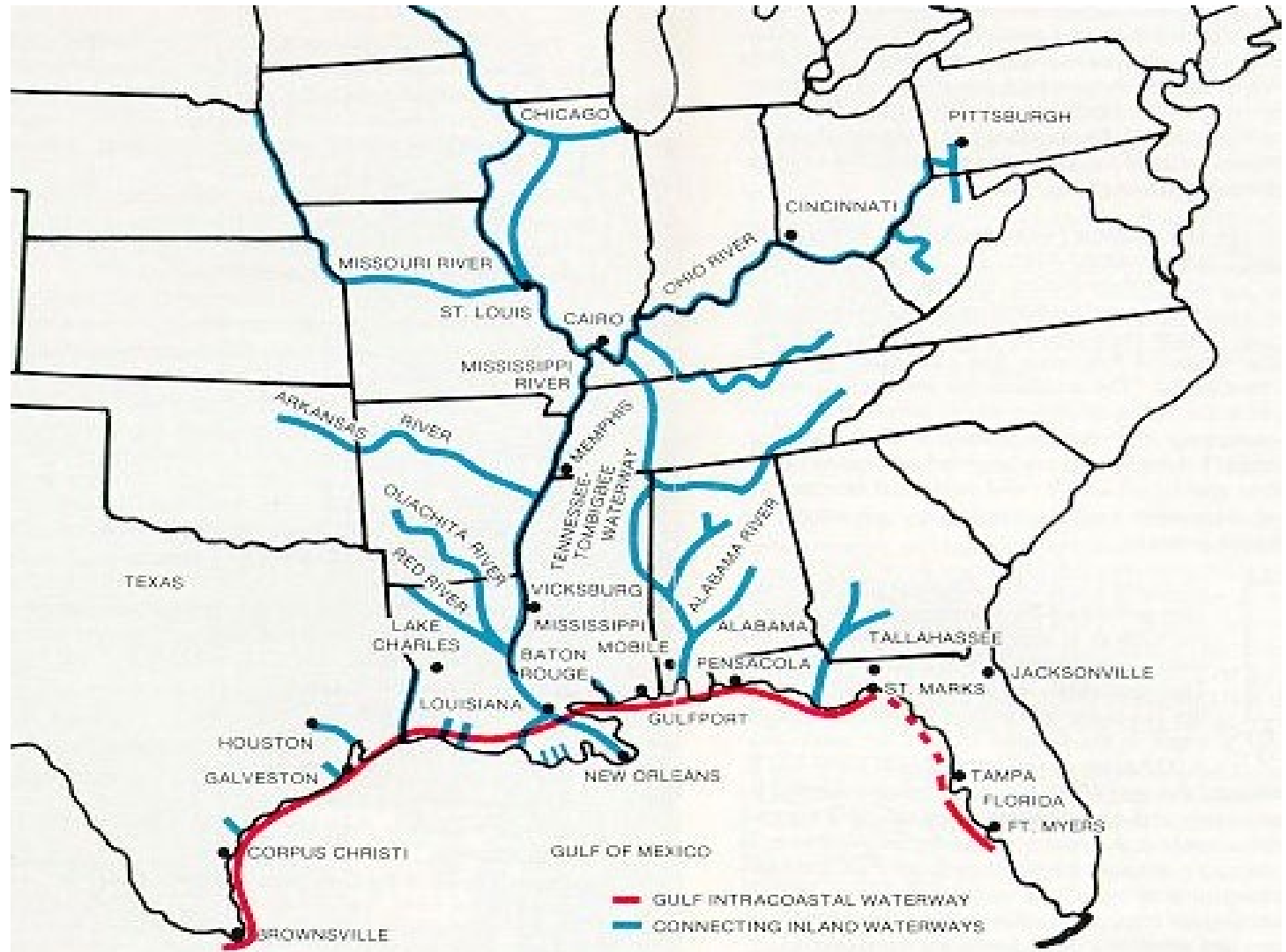
# Gulf Intracoastal Waterway

## Update, Challenges, and Priorities



# GIWW is 115 years old, Spans 1100 miles

## Brownsville, TX to St. Marks, FL



# GIWW Traffic and Cargo

GIWW traffic accounts for 111 million tons

69 million tons of petroleum /petroleum products - 23 million tons crude oil

20 million tons of chemical and related products

Estimated Cargo Value on GIWW - \$90 Billion

Only the Mississippi and Ohio River systems carried more cargo than the GIWW

GIWW Cargo Leaders:

Petroleum/Petroleum Products – 62%

Chemicals - 18%

Crude Materials - 15 %

Coal -- 2 %

# GIWW – Value to the Nation

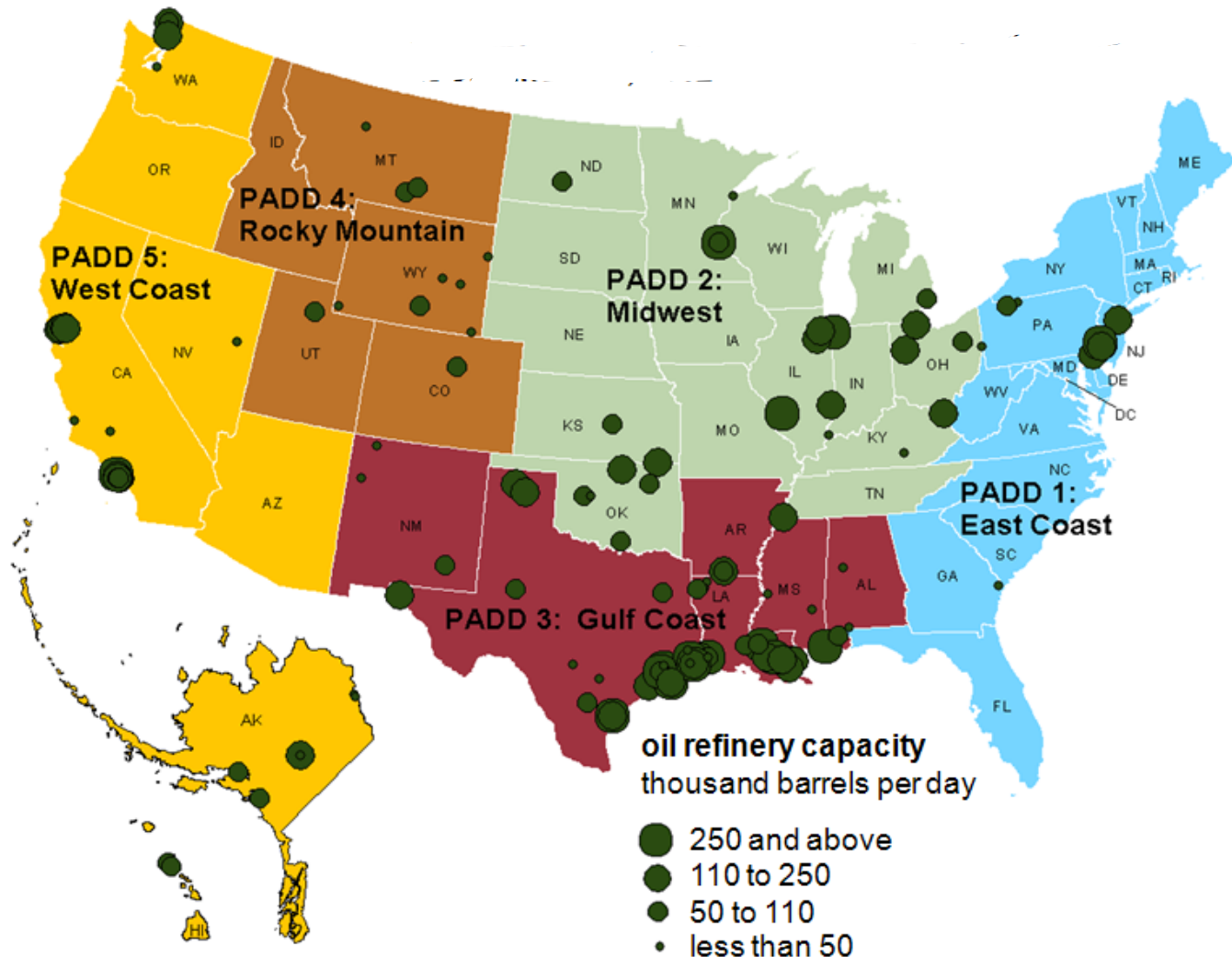
- 2017 National Waterways Foundation Study - indicates over \$1 Billion impact to long term lock closure on GIWW

Strong indicator of *true value* of the GIWW

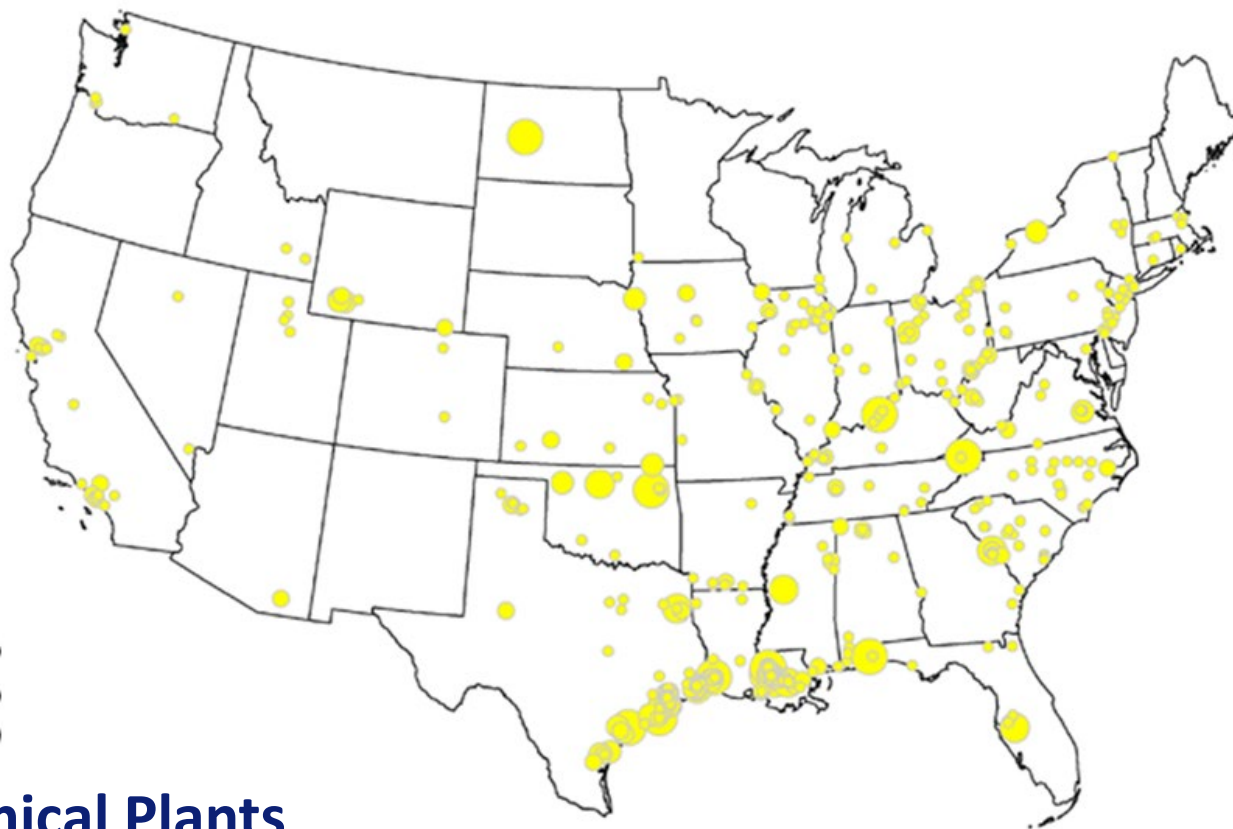
- 2018 Maritime Transportation Research and Education Study - projects economic impacts by county and state

143,000 jobs and \$61.5 Billion in economic impact  
Saves \$4.3 Billion in annual transportation costs

# GIWW Cargo – Where's it go?



# GIWW Cargo – Here, too

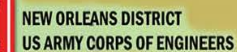


**Chemical Plants**



# GIWW Challenges

- USACE Dredging Funds for FY 2020 – Need to maintain momentum of significant storm related plus ups in O&M
- Aged / Outdated Infrastructure
  - IHNC Lock – Replacement Study underway – GRR/SEIS Nearly Complete – Expect Director's Report in February 2020
  - Brazos River Floodgates and Colorado Locks – TXDOT and USACE Feasibility Study completed  
Chief's Report Signed on October 23, 2019
  - Bayou Sorrel – Flawed 2013 Post Authorization Change Report miscalculated delays due small lock chamber, resulting incorrect B/C ratio – NEED ANOTHER REPORT.
- Ongoing repairs on GIWW structures which have no alternative route for passing.



## Updated: 28 Mar 2013

Note:  
This schematic is not to  
scale.





# IHNC Lock

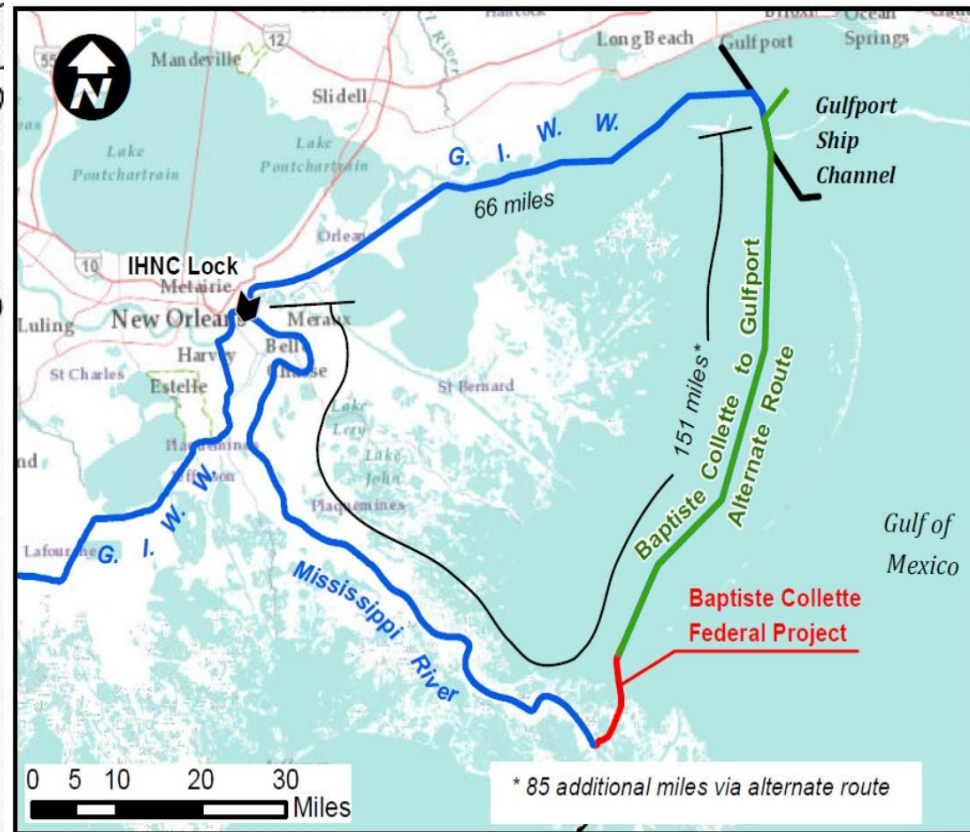
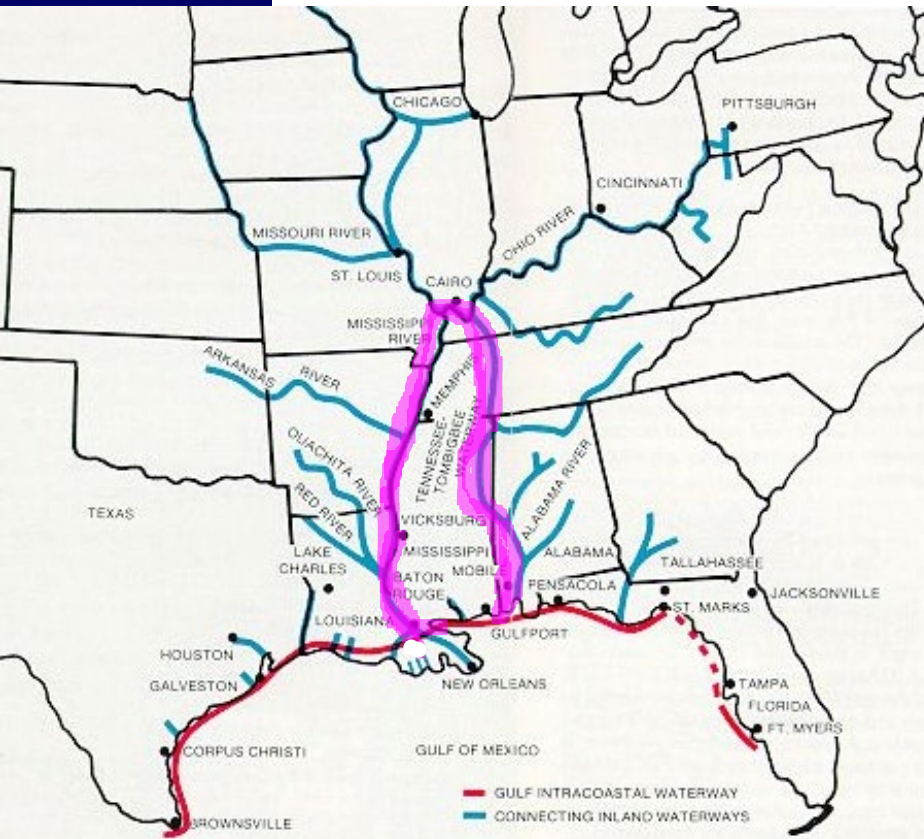
(1923)



640 ft long x 75 ft wide x 31.5 ft deep



# Alternate Routes Without IHNC Lock





# Replacement Lock



900 ft long x 110 ft wide x 22 ft deep

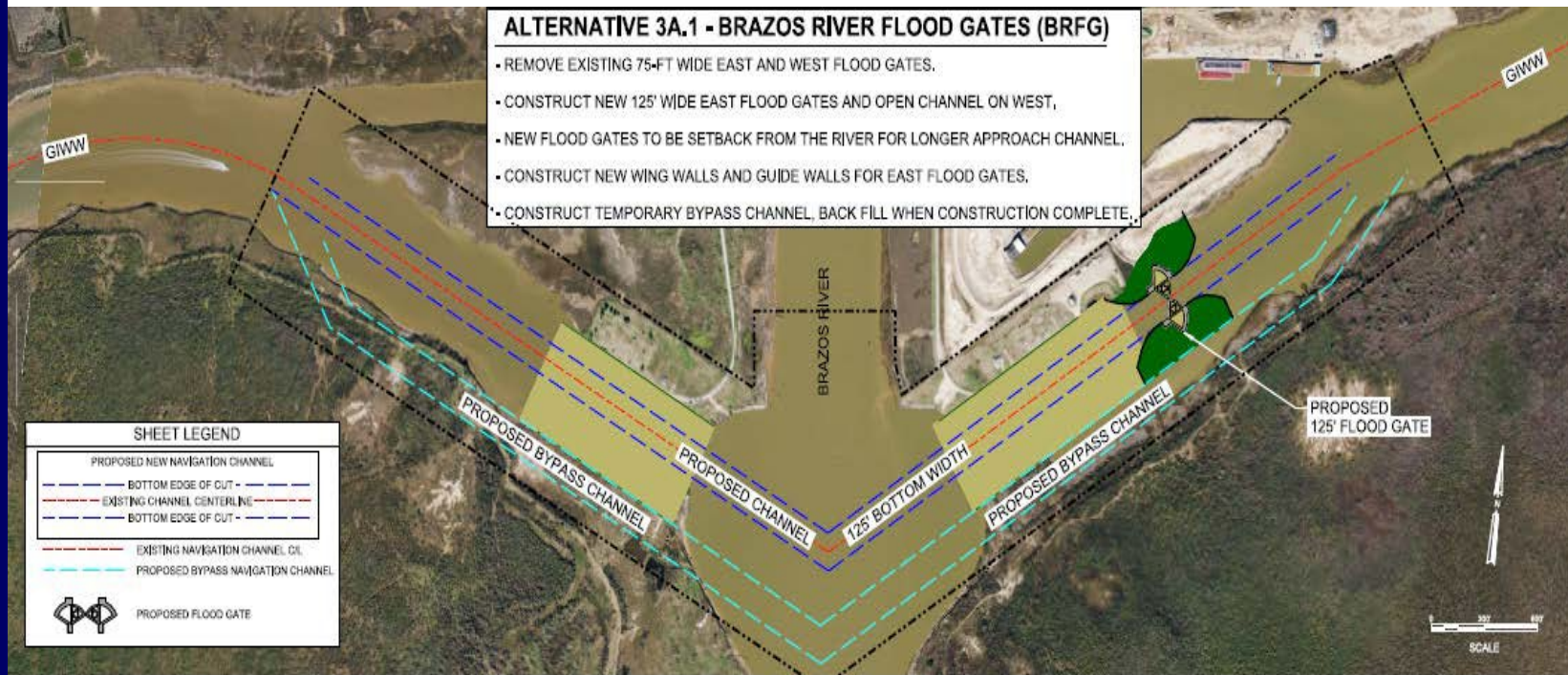


# Brazos River Floodgates, TX

## 75 feet wide



# Brazos Floodgates Approved Replacement

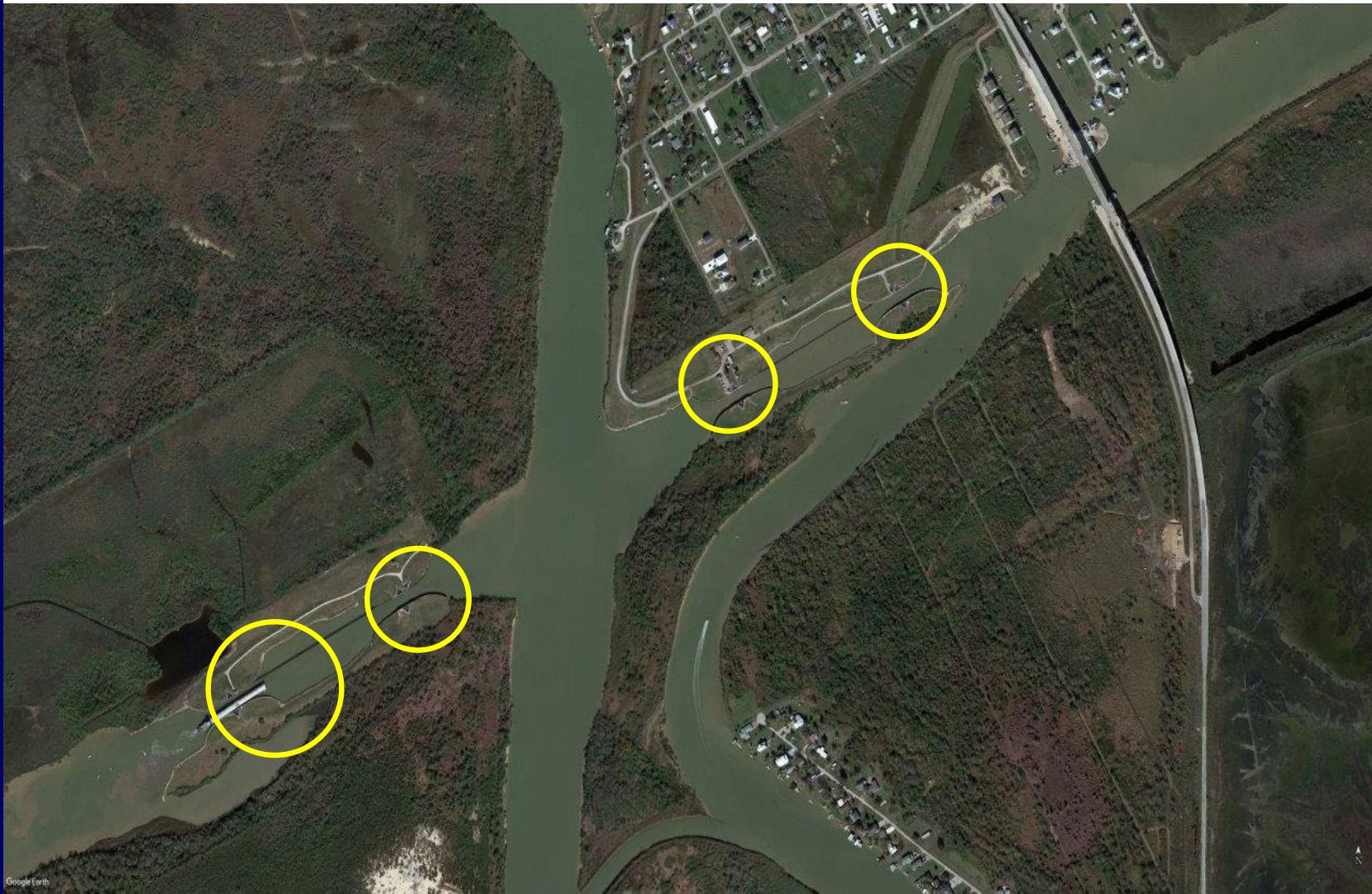


Remove west gate – Move east gate and widen to 125 feet



# Colorado Locks, TX

75 feet wide

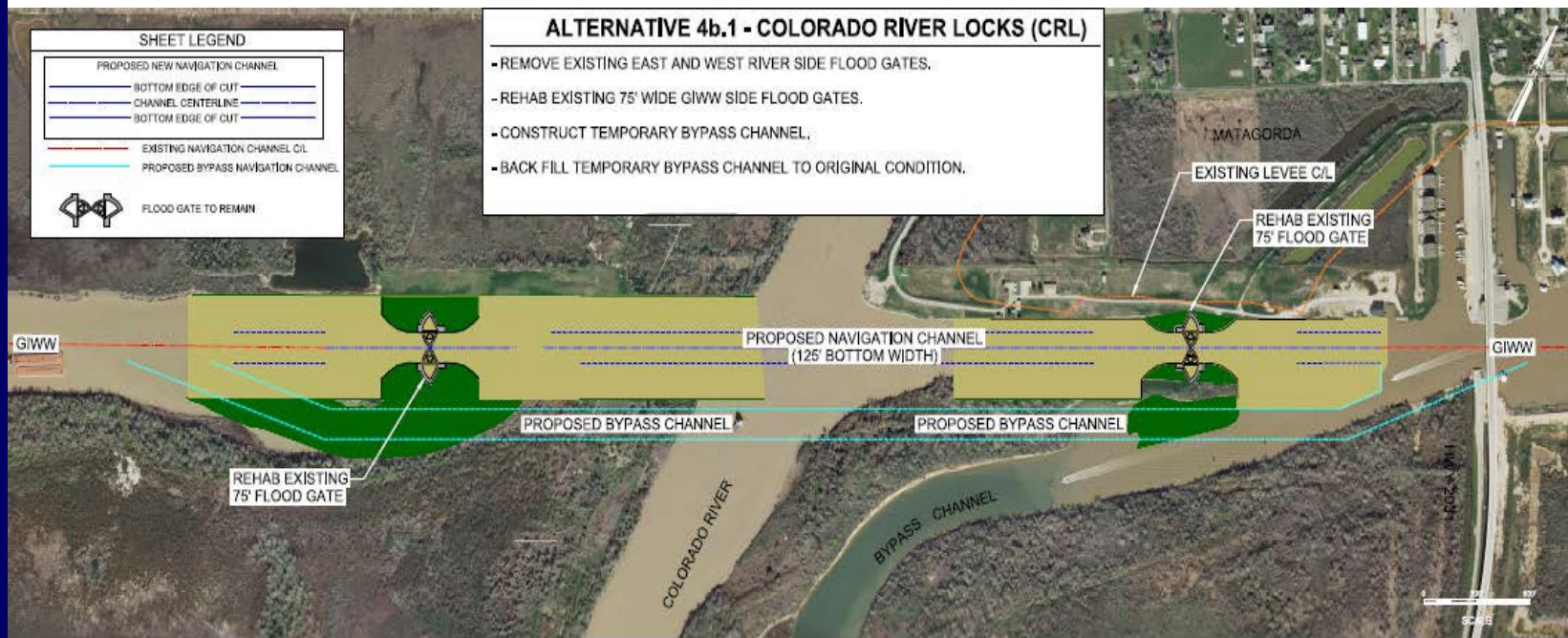


# Why Locks?





# Colorado Locks Approved Plan



**Remove Inner Gates – Widen Outer Gates to 125 feet**

# Bayou Sorrel Lock

797 ft long x 56 ft wide





# Calcasieu & Bayou Boeuf Lock Guidewall Replacement







**Gulf Intracoastal Canal Association is a not-for-profit trade association – 115 years old**

**200 members – tow / barge companies, shippers, terminals, shipyards, ports, suppliers, fleets, fuelers, state & local agencies & more**

**Mission**

**To facilitate commerce through ensuring safe, reliable and efficient Gulf Coast waterways.**

**Vision**

***The Voice of the GIWW and its users.***



# Accomplishing the GICA Mission

- *Identify, analyze and address GIWW issues*
  - GICA NAV ALERTS – PortVision graphic display
- *Educate and inform the public of GIWW's importance to the nation*
- *Advocate for adequate capital and maintenance funding (Federal and State)*
- *Coordinate and partner with other industry groups/associations on waterways issues*
- *Assist USCG and USACE in identifying and rectifying hazards and improvements to the waterway*
- *Response - Joint Hurricane Team....cooperative government and industry approach to reopening the maritime commerce along waterways impacted by natural disaster.*

# GICA 115<sup>th</sup> Annual Seminar



**August 5-7, 2020  
Westin Canal Place  
New Orleans, LA**

## **Presentations:**

- **Federal and State Partners**
- **Industry Leaders**
- **Expert Marine Operators**
- **Relevant Political Leaders**

**Golf and Spouses' Events**

***[www.gicaonline.com](http://www.gicaonline.com)***

**Jim Stark**

**President**

**[jstark@gicaonline.com](mailto:jstark@gicaonline.com)**

**901-490-3312**

**[www.gicaonline.com](http://www.gicaonline.com)**

